

# WOODBURNING STOVE REPORT

WOODBURNING STOVE(S) ONLY SOURCE OF HEAT?  YES  NO

MANUFACTURED OR HOME-BUILT? \_\_\_\_\_

PERMANENTLY ATTACHED LABEL OF RECOGNIZED TESTING LABORATORY?  YES  NO

IF YES,  UL  OTHER \_\_\_\_\_

TYPE OF STOVE  RADIANT OPEN DRAFT (non-airtight)  COOK-STOVE  
 RADIANT AIRTIGHT (gasket mounted)  CENTRAL WOOD-BURNING FURNACE  
 CIRCULATING (double enclosure)  FIREPLACE INSERT

ADD-ON WOODBURNING  FURNACE ATTACHED TO  GAS  OIL

CONSTRUCTION  PLATE STEEL  CAST IRON  SHEET METAL

INSTALLED BY  OWNER  CONTRACTOR

## CHIMNEY – FLUE

TYPE OF CHIMNEY  MASONRY WITHOUT LINER  MASONRY WITH LINER  
 DOUBLE WALL INSULATED METAL  TRIPLE WALL THERMAL  SINGLE WALL METAL

HOW OFTEN IS CHIMNEY CLEANED? \_\_\_\_\_ BY WHOM?  CONTRACTOR  SELF

TOTAL NUMBER OF HEATING UNITS CONNECTED TO SAME CHIMNEY? \_\_\_\_\_

IF MORE THAN ONE, DOES CHIMNEY HAVE SEPARATE FLUES?  YES  NO

HAS THERE EVER BEEN A CHIMNEY FIRE?  YES  NO

IF YES, HAS THE CHIMNEY BEEN INSPECTED BY A PROFESSIONAL AFTER THE FIRE?  YES  NO

## CHIMNEY CONNECTOR / STOVEPIPE

TYPE OF CONNECTOR (check one)

NO CONNECTOR – FACTORY BUILT CHIMNEY ATTACHED DIRECTLY TO UNIT

STOVEPIPE ATTACHED DIRECTLY TO MASONRY CHIMNEY

STOVEPIPE CONNECTS CHIMNEY THROUGH COMBUSTIBLE WALL, CEILING OR FLOOR

*IF THIS TYPE CONNECTIONS, ANSWER "PROTECTION / CLEARANCE" QUESTIONS A – D BELOW*

A. SHORT INSULATED FACTORY BUILT WALL SLEEVE/CHIMNEY SECTION WITH AT LEAST 8" CLEARANCE  YES  NO

B. FIRE CLAY THIMBLE IN SOLID MASONRY WITH AT LEAST 8" CLEARANCE  YES  NO

C. METAL VENTILATED THIMBLE WITH AT LEAST 6" CLEARANCE  YES  NO

D. WALL CUT BACK FROM PIPE WITH AT LEAST 18" CLEARANCE  YES  NO

IF WALL CUT BACK, OPENING IS COVERED BY \_\_\_\_\_

STOVEPIPE VERTICAL DIAMETER \_\_\_\_\_ LENGTH \_\_\_\_\_ # OF ELBOWS \_\_\_\_\_

HORIZONTAL DIAMETER \_\_\_\_\_ LENGTH \_\_\_\_\_ # OF ELBOWS \_\_\_\_\_

# PROTECTION

- IS SOMEONE ON THE PREMISES DURING THE DAY WHEN UNIT IS OPERATING?  YES  NO
- IS THERE AN ABC (all classes) FIRE EXTINGUISHER ON HAND?  YES  NO
- IS THERE AT LEAST ONE SMOKE ALARM ON THE PREMISES?  YES  NO
- IS STOVE CLEANED ONCE PER YEAR OR MORE?  YES  NO

## EXPOSURES TO COMBUSTIBLE MATERIAL INCLUDING DRYWALL, PLASTER OR BLOCK OVER WOODSTOVE

- FLOOR MATERIAL COMBUSTIBLE?  YES  NO
- IF YES, ANY PROTECTIVE COVERING?  YES  NO

STOVE FOUNDATION IS NON-COMBUSTIBLE MATERIAL WITH:

- AT LEAST 18" CLEARANCE FRONT AND SIDES?  YES  NO

IF NO, INDICATE CLEARANCE DISTANCE \_\_\_\_\_

- AT LEAST 6" CLEARANCE REAR?  YES  NO

IF NO, INDICATE CLEARANCE DISTANCE \_\_\_\_\_

- PROTECTIVE COVERING ON WALLS  YES  NO CEILING?  YES  NO

IF SO, DISCRIBE MATERIAL: \_\_\_\_\_  
(asbestos, millboard, min. 28 gauge sheet metal, etc.)

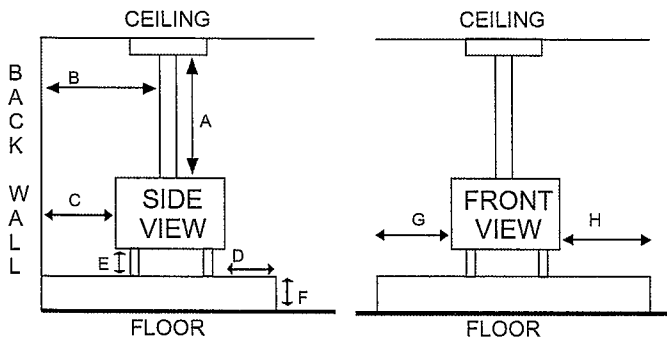
- MINIMUM OF 1" VENTED AIR SPACE ON ALL FOUR SIDES BETWEEN PROTECTIVE COVERING AND WALLS?  YES  NO

- CEILING?  YES  NO

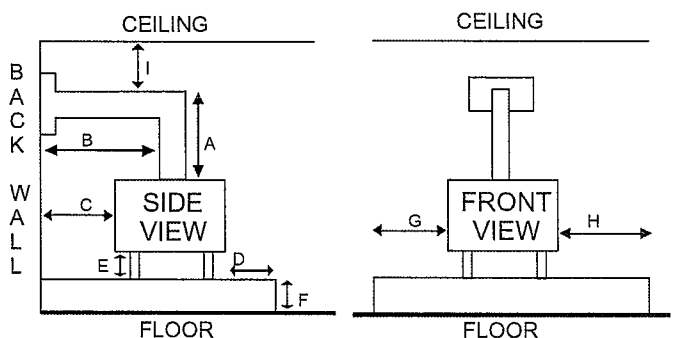
- STANDOFFS OR SPACERS NONCOMBUSTIBLE (metal, ceramic, etc.)  YES  NO

## MEASURE AND INDICATE DISTANCES AS ILLUSTRATED BELOW

1.



2.



- A LENGTH OF STOVEPIPE
- B DISTANCE FROM STOVEPIPE TO NEAREST WALL
- C DISTANCE FROM BACK OF STOVE TO NEAREST WALL
- D DISTANCE FROM FRONT OF STOVE TO EDGE OF FLOOR MATERIAL
- E LENGTH OF LEGS
- F THICKNESS OF FLOORING MATERIAL
- G DISTANCE FROM STOVE TO EDGE OF FLOORING
- H DISTANCE FROM STOVE TO EDGE OF FLOORING
- I DISTANCE FROM STOVEPIPE TO CEILING

ADDITIONAL REMARKS: \_\_\_\_\_

\_\_\_\_\_

\_\_\_\_\_

\_\_\_\_\_

\_\_\_\_\_

\_\_\_\_\_

\_\_\_\_\_

\_\_\_\_\_

\_\_\_\_\_